



PARTICULATE MATTER SENSOR SAPS SERIES

Automotive Sensor Solutions for Increased Well-Being and Energy Efficiency

For PM2.5 Monitoring and Indoor Air Quality Applications

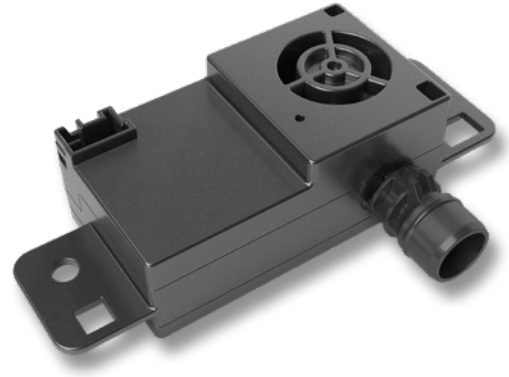
- Accurate measurements for different types of air particulate matter (PM2.5) compositions in mass-concentration sensing
- Robust measurements in case of condensation and accelerations
- Reliable performance over lifetime ensured by improved resilience to dust accumulation

SAPS30

SENSIRION AUTOMOTIVE PARTICULATE MATTER SENSOR

FEATURES

- PM2.5 output
- Class 1 Laser based technology
- Response time: < 5 seconds*
- Dust and water resilience over lifetime
- RoHS and REACH compliant
- Customization solution in housing for dashboard or HVAC integration



APPLICATIONS

VALUE TO THE CUSTOMER

- Increased awareness for health and comfort due to particulate matter concentration monitoring inside the car cabin
- Reminding air quality in-situ changes in the cabin

SPECIFICATIONS

SAPS30 Sensor Specifications	
Particle size	PM2.5 (0.3–2.5 µm)
Mass concentration range	0–1,000 µg/m ³
Mass concentration resolution	1 µg/m ³
Accuracy (to Grimm 11-D and KCl*)	±15 µg/m ³ (1 to 100 µg/m ³) and ±15 % (100 to 1,000 µg/m ³)*
Operating temperature range	–30 to +75 °C
Storage temperature range	–40 to +85 °C
Supply voltage	9–16 V
Electrical interface	LIN 2.1
IP ranking	IP52 with air tight flow channel design
Mech. dimensions	73 mm × 30 mm × 40.4 mm**
Weight	< 100 g

* To avoid particulate settling or accumulation at the air outlet or air inlet, which may affect product sensitivity, response time and accuracy, ensure that the SAPS series are installed by Sensirion Automotive Solution instruction.

** Dimensions of SAPS30 sensor main body, not including mechanical parts for installation.