



DEW POINT SENSOR SADP SERIES

Automotive Sensor Solutions for Increased Well-Being and Energy Efficiency

For Energy Efficient Generation of Decent In-Cabin Climate

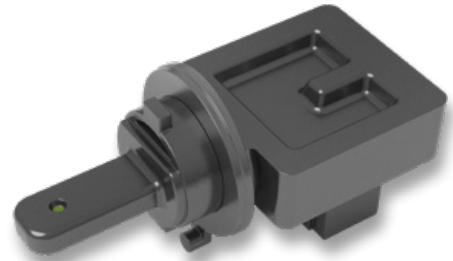
- Accurate measurement of dew point temperature
- Higher energy efficiency by improved HVAC evaporator control
- Avoid low humidity in the cabin to increase passengers' comfort

SADP3

SENSIRION AUTOMOTIVE DEW POINT SENSOR

FEATURES

- Fast response time due to small dead volume surrounding the sensing element
- Easy mounting with bayonet
- Automotive grade connector, customer specific solutions
- Hotmelt encapsulation and watertight measurement tip (IP6K4)



APPLICATIONS

VALUE TO THE CUSTOMER

- Sensor is integrated in the air channel of the HVAC system and provides reliable information about the dew point temperature
- Improved in-cabin climate as air at decent humidity level can be generated
- Increased HVAC energy efficiency, as dew point signal can be used to optimize evaporator setpoint

SPECIFICATIONS

SADP3 Sensor Specifications	
Relative humidity	Range 0 - 100 %
Temperature	Range -40 - 85°C Accuracy $\pm 0.5^\circ\text{C}$
Dew point temperature	Range -15 - 70°C dew point Accuracy $\pm 2^\circ\text{C}$ dew point (20 - 50°C air temp. / 30 - 100 %RH)
Electrical interface	LIN 2.2, 19.2 kbd
Supply current	Typ. 2 mA
Supply voltage	9 - 16 V
Mech. dimensions	62 mm \times 26 mm \times 33 mm
Weight	15 g